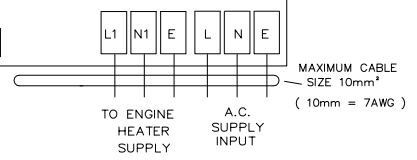
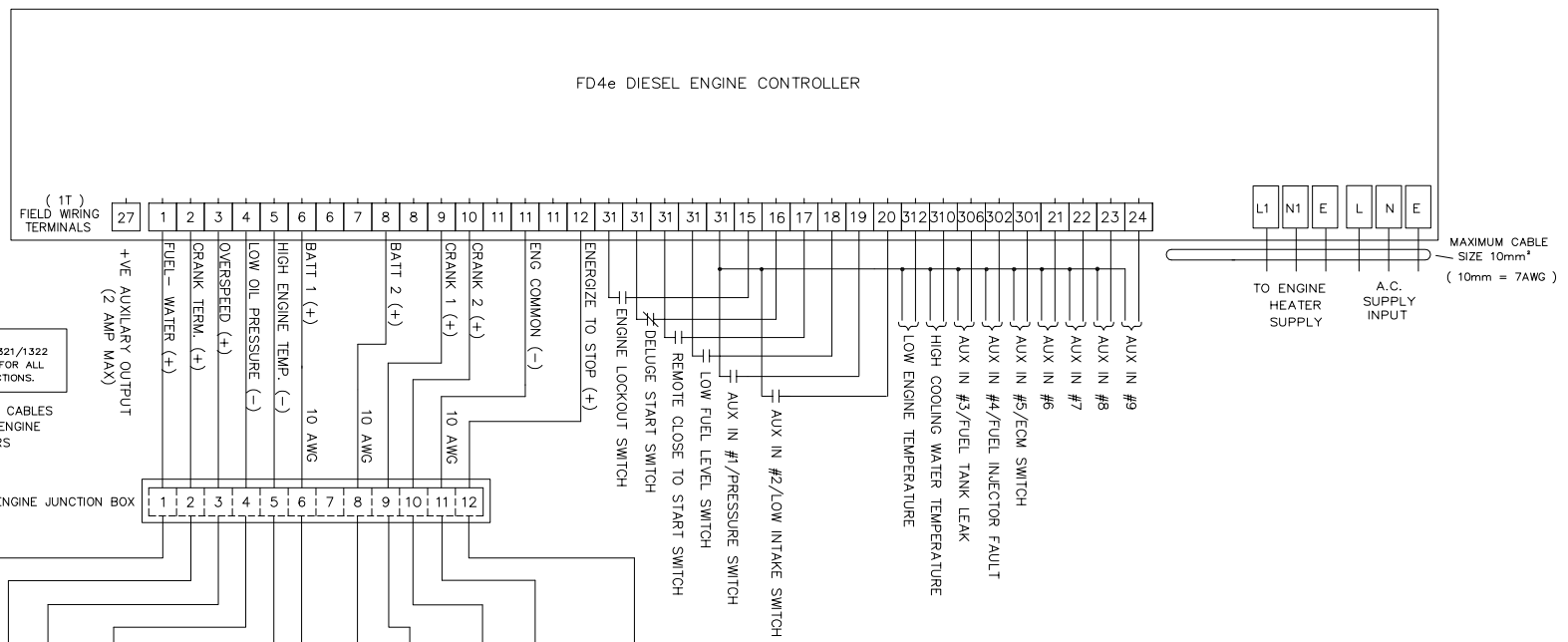


SW1	AUTO	OFF	MAN
1			⊙
2			⊙
3			⊙
4		⊙	
5		⊙	

CONTROLLED DOCUMENT  
THIS DRAWING IS  
FM APPROVED  
AND MUST NOT BE  
MODIFIED WITHOUT  
THEIR CONSENT

FD4e DIESEL ENGINE CONTROLLER

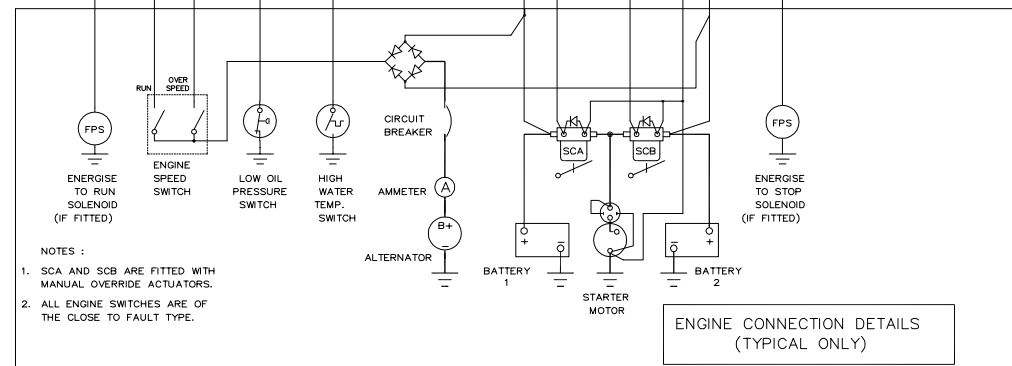
CONTROLLED DOCUMENT  
THIS DRAWING IS  
FM APPROVED  
AND MUST NOT BE  
MODIFIED WITHOUT  
THEIR CONSENT



NOTE:  
ACCORDING TO FM STANDARD 1321/1322  
COPPER CABLE MUST BE USED FOR ALL  
CONTROLLER TO ENGINE CONNECTIONS.

NOTE: MAXIMUM LENGTH OF CABLES  
INTERCONNECTED BETWEEN ENGINE  
& CONTROLLER - 10 METERS

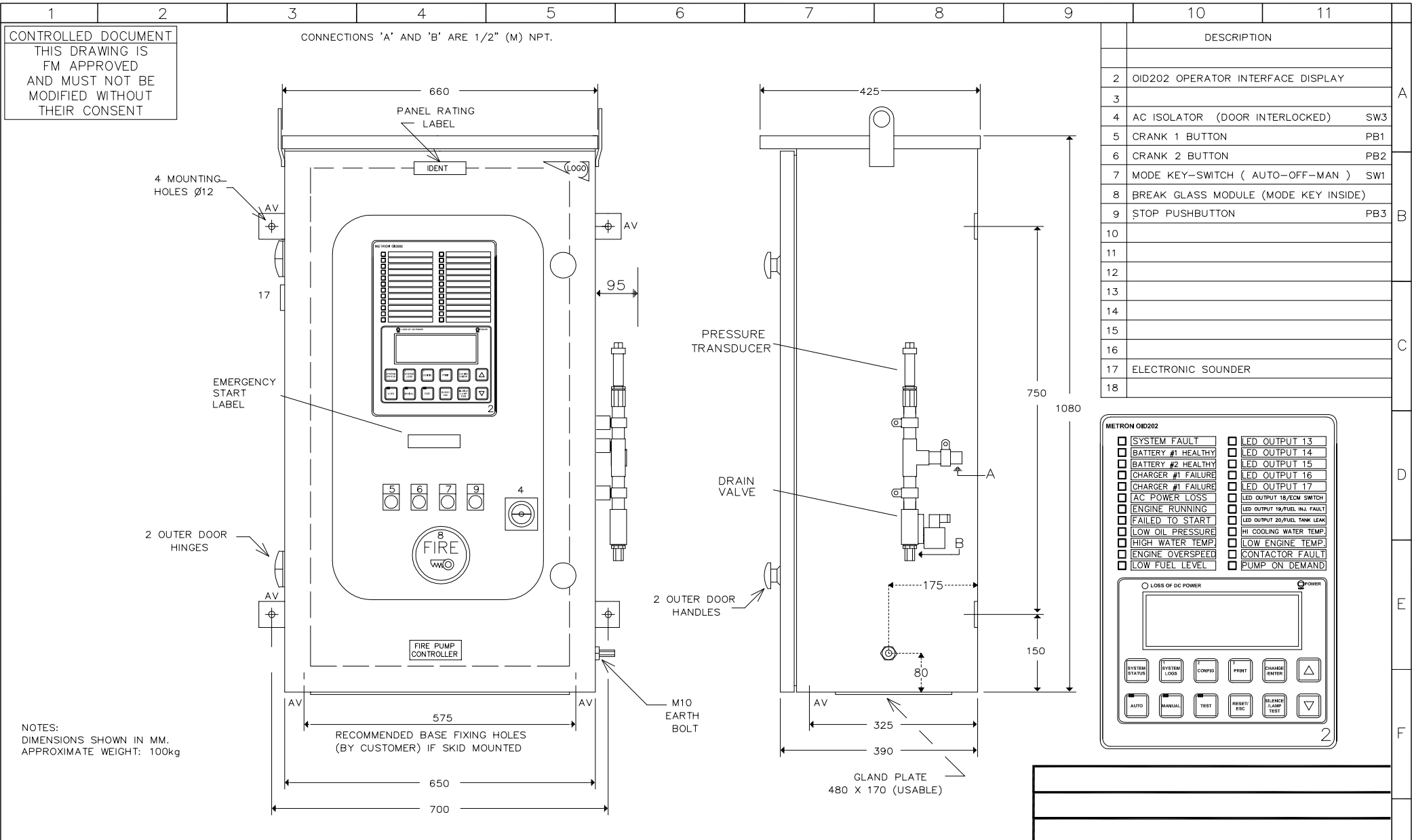
SEE SHEET 1  
FOR DETAILS  
10mm<sup>2</sup> CABLE  
MUST BE USED TO  
CONNECT 6,8 & 11  
TO ENGINE BATTERIES.



- NOTES :
1. SCA AND SCB ARE FITTED WITH MANUAL OVERRIDE ACTUATORS.
  2. ALL ENGINE SWITCHES ARE OF THE CLOSE TO FAULT TYPE.

OPTIONS FITTED									

ISSUE 1	ISSUE 2	ISSUE 3	ISSUE 4	ISSUE 5	ISSUE 6	ISSUE 7	ISSUE 8	C.A.D. Software	AUTOCAD	ISSUE No.	DRN	CHK	TITLE
VS.00 FIRMWARE NFPA20, 2013 CHANNELS ADDED										1 4-OCT-2013	D.Ca		SCHEMATIC DIAGRAM FOR CONTROLLER TYPE FD4e (V5.0)
4-OCT-2013										2			DRG. No. SH1 1 OF 1
													AE2221/N v500
											Metron-Eledyne GRANTHAM, ENGLAND TELEPHONE (01476) 516120 WWW.METRONLEDYNE.CO.UK		© THIS DRAWING IS THE COPYRIGHT OF METRON-ELEDYNE AND MUST NOT BE LENT, COPIED OR REPRODUCED WITHOUT PRIOR PERMISSION.



METRON OID202

<input type="checkbox"/> SYSTEM FAULT	<input type="checkbox"/> LED OUTPUT 13
<input type="checkbox"/> BATTERY #1 HEALTHY	<input type="checkbox"/> LED OUTPUT 14
<input type="checkbox"/> BATTERY #2 HEALTHY	<input type="checkbox"/> LED OUTPUT 15
<input type="checkbox"/> CHARGER #1 FAILURE	<input type="checkbox"/> LED OUTPUT 16
<input type="checkbox"/> CHARGER #2 FAILURE	<input type="checkbox"/> LED OUTPUT 17
<input type="checkbox"/> AC POWER LOSS	<input type="checkbox"/> LED OUTPUT 18/ECM SWITCH
<input type="checkbox"/> ENGINE RUNNING	<input type="checkbox"/> LED OUTPUT 19/FUEL INJ. FAULT
<input type="checkbox"/> FAILED TO START	<input type="checkbox"/> LED OUTPUT 20/FUEL TANK LEAK
<input type="checkbox"/> LOW OIL PRESSURE	<input type="checkbox"/> HI COOLING WATER TEMP.
<input type="checkbox"/> HIGH WATER TEMP.	<input type="checkbox"/> LOW ENGINE TEMP.
<input type="checkbox"/> ENGINE OVERSPEED	<input type="checkbox"/> CONTACTOR FAULT
<input type="checkbox"/> LOW FUEL LEVEL	<input type="checkbox"/> PUMP ON DEMAND

LOSS OF DC POWER

ISSUE 1	ISSUE 2	ISSUE 3	3RD ANGLE PROJECTION	ISSUE No.	DRN	CHK	TITLE	
v5.00 FIRMWARE NFPA20, 2013 CHANNELS ADDED.				1 4/10/2013	D.Ca		GENERAL ARRANGEMENT CONTROLLER TYPE FD4e (V5.0) NEMA 4	
24-DEC-2010			SERIAL No.	2			Metron-Eledyne GRANTHAM, ENGLAND TELEPHONE (01476) 516120 WWW.METRONELEDYNE.CO.UK	
			© THIS DRAWING IS THE COPYRIGHT OF METRON ELEDYNE DIVISION AND MUST NOT BE LENT, COPIED OR REPRODUCED WITHOUT PRIOR PERMISSION.				DRG. No. AM3139/v500	