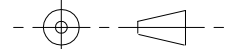

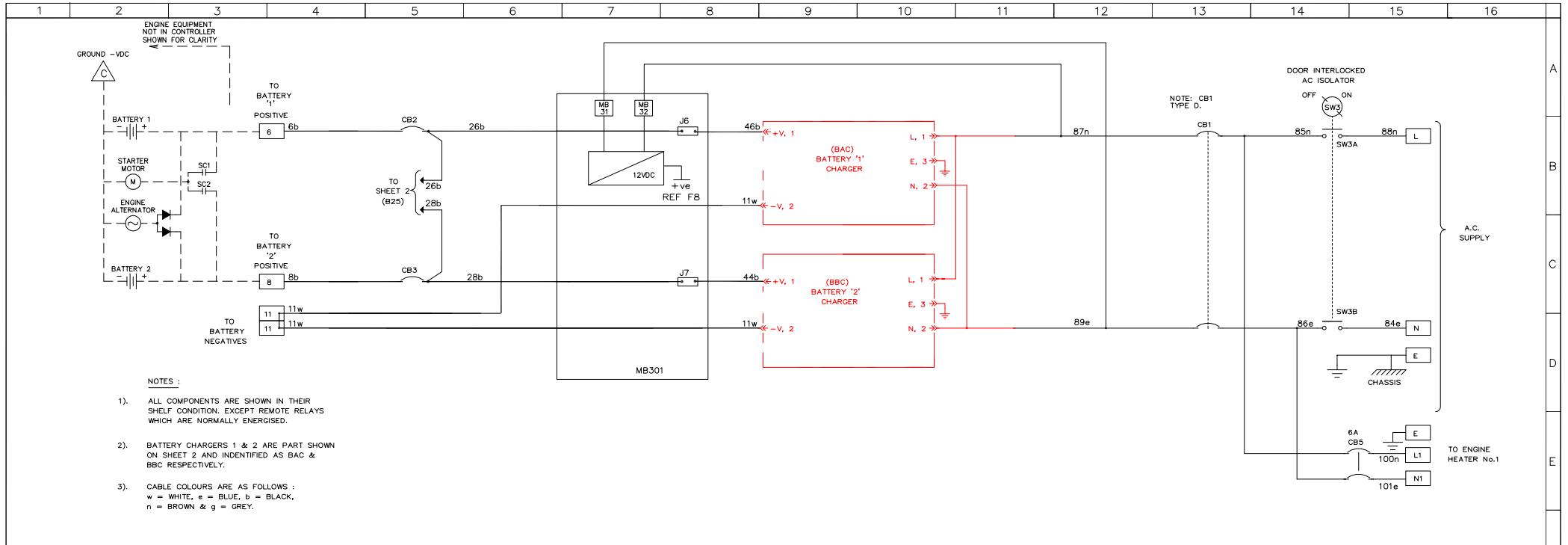


NOTES:  
 DIMENSIONS SHOWN IN MM.  
 APPROXIMATE WEIGHT: 78kg

ISSUE 1	ISSUE 2	ISSUE 3	3RD ANGLE PROJECTION 	ISSUE No.	DRN	CHK	TITLE GENERAL ARRANGEMENT CONTROLLER TYPE FD4e (V5.0) NEMA 2 (IP54)	
v5.00 FIRMWARE NFPA20, 2013 CHANNELS ADDED.				1 4/10/2013	D.Ca			
SERIAL No.			© THIS DRAWING IS THE COPYRIGHT OF METRON ELEDYNE DIVISION AND MUST NOT BE LENT, COPIED OR REPRODUCED WITHOUT PRIOR PERMISSION.	Metron-Eledyne GRANTHAM, ENGLAND TELEPHONE (01476) 516120 WWW.METRONELEDYNE.CO.UK				
24-DEC-2010								



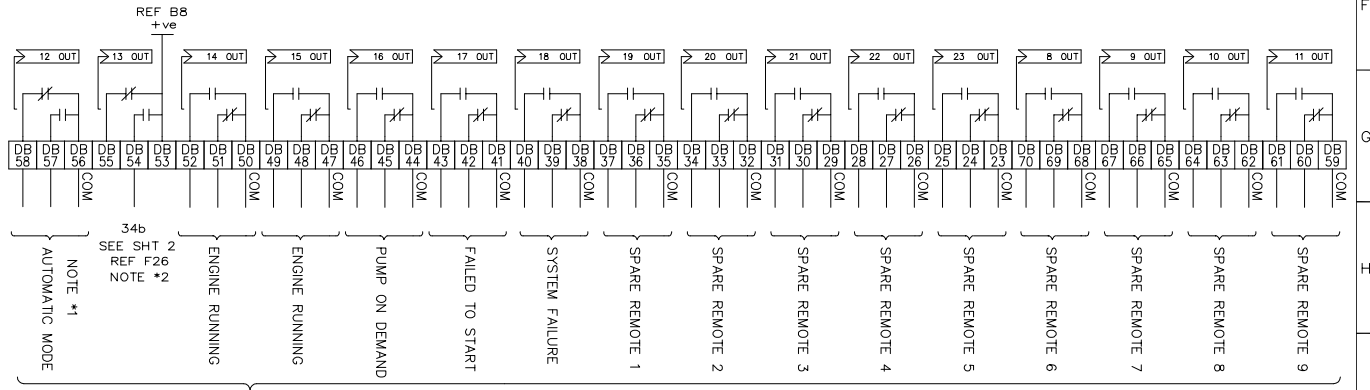
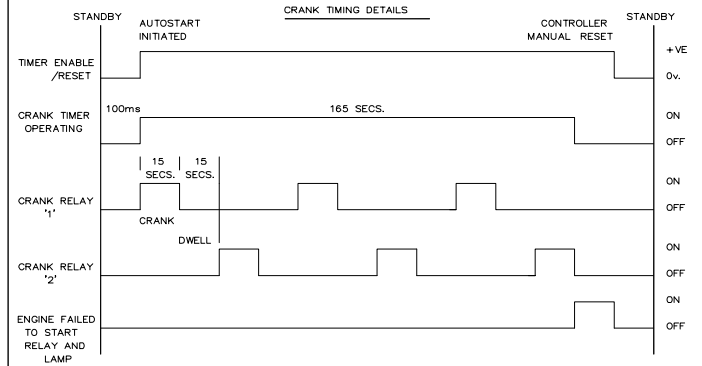
- NOTES :
- 1). ALL COMPONENTS ARE SHOWN IN THEIR SHELF CONDITION, EXCEPT REMOTE RELAYS WHICH ARE NORMALLY ENERGISED.
  - 2). BATTERY CHARGERS 1 & 2 ARE PART SHOWN ON SHEET 2 AND IDENTIFIED AS BAC & BBC RESPECTIVELY.
  - 3). CABLE COLOURS ARE AS FOLLOWS :  
w = WHITE, e = BLUE, b = BLACK,  
n = BROWN & g = GREY.

MOTHERBOARD MB301  
JUMPER SETTINGS

DAUGHTERBOARD DB301  
JUMPER SETTINGS

GND mA    AIN01

DB 8 J17,J18 0-10AMPS CHARGER (OPTION J)  
OR  
DB 8 J17,J18 0-20AMPS CHARGER (OPTION JJ)



VOLTFREE MONITOR CONTACTS  
(125VAC, 5AMPS, NON INDUCTIVE LOADS ONLY)  
CONTACTS SHOWN IN NORMAL, NON-ALARM  
CONDITION, TYPICAL

NOTE \*1  
CONTACTS ALSO CHANGEOVER IF DC POWER IS COMPLETELY LOST

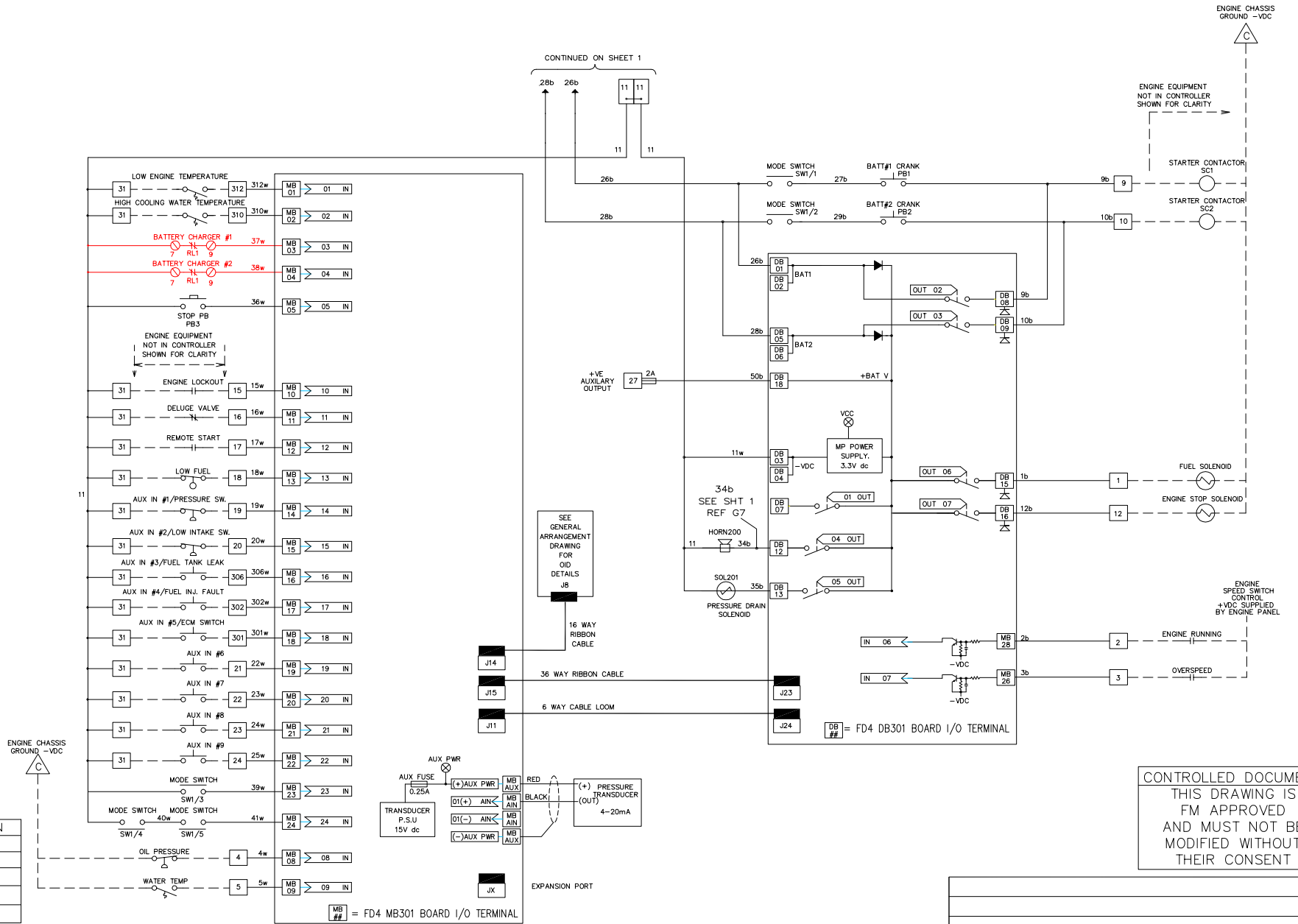
NOTE \*2  
CONTACTS CHANGEOVER WHEN PROCESSOR FAILS & INITIATE AUDIBLE ALARM

CONTROLLED DOCUMENT  
THIS DRAWING IS  
FM APPROVED  
AND MUST NOT BE  
MODIFIED WITHOUT  
THEIR CONSENT

ISSUE 1	ISSUE 2	ISSUE 3	ISSUE 4	ISSUE 5	ISSUE 6	ISSUE 7	ISSUE 8	C.A.D. Software	AUTOCAD	ISSUE No.	DRN	CHK	TITLE	
V5.00 FIRMWARE NFPA20, 2013 CHANNELS ADDED										1 4-OCT-2013 2	D.Ca		SCHEMATIC DIAGRAM FOR CONTROLLER TYPE FD4e (v5.0)	
4-OCT-2013													DRG. No. SH1 1 OF 2 AE2221 /v500	

© THIS DRAWING IS THE COPYRIGHT OF  
METRON-ELEDYNE AND MUST NOT BE LENT,  
COPIED OR REPRODUCED WITHOUT PRIOR  
PERMISSION.

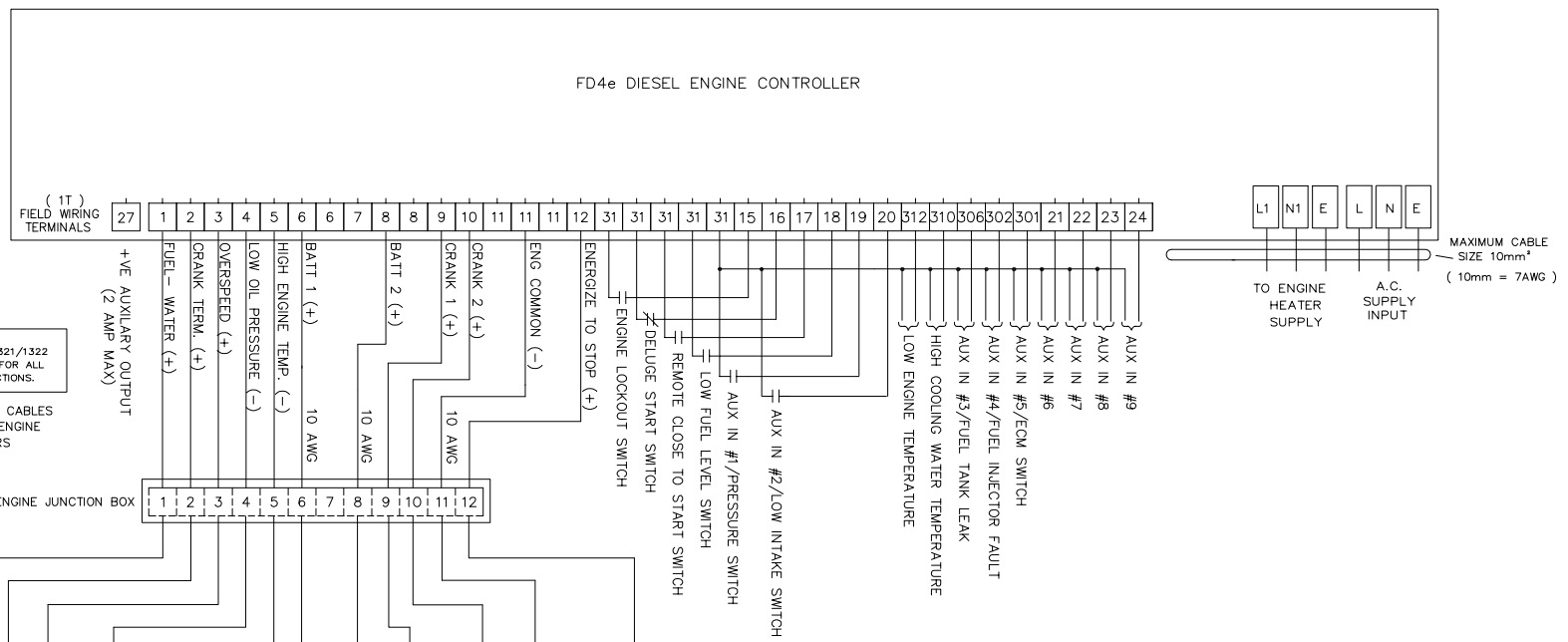
Metron-Eledyne  
GRANTHAM, ENGLAND  
TELEPHONE: (01476) 516120  
WWW.METRON-ELEDYNE.CO.UK



SW1	AUTO	OFF	MAN
1			⊙
2			⊙
3			⊙
4		⊙	
5		⊙	

FD4e DIESEL ENGINE CONTROLLER

CONTROLLED DOCUMENT  
THIS DRAWING IS  
FM APPROVED  
AND MUST NOT BE  
MODIFIED WITHOUT  
THEIR CONSENT

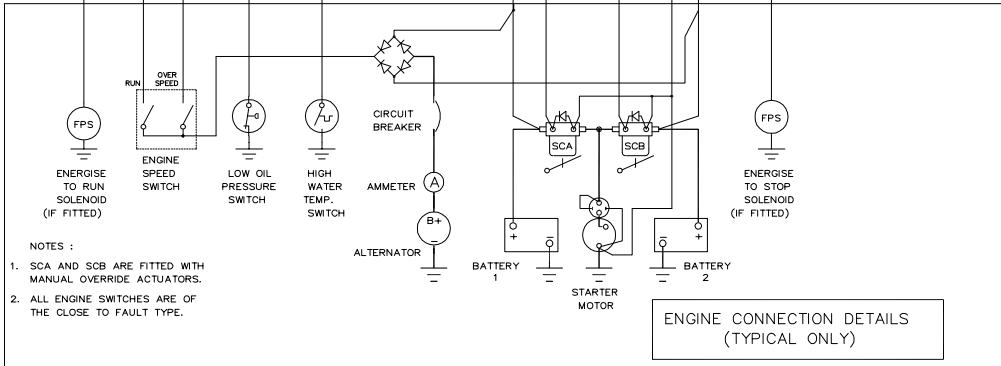


NOTE:  
ACCORDING TO FM STANDARD 1321/1322  
COPPER CABLE MUST BE USED FOR ALL  
CONTROLLER TO ENGINE CONNECTIONS.

NOTE: MAXIMUM LENGTH OF CABLES  
INTERCONNECTED BETWEEN ENGINE  
& CONTROLLER - 10 METERS

MAXIMUM CABLE  
SIZE 10mm<sup>2</sup>  
(10mm = 7AWG)

SEE SHEET 1  
FOR DETAILS  
10mm<sup>2</sup> CABLE  
MUST BE USED TO  
CONNECT 6,8 & 11  
TO ENGINE BATTERIES.



- NOTES :
1. SCA AND SCB ARE FITTED WITH MANUAL OVERRIDE ACTUATORS.
  2. ALL ENGINE SWITCHES ARE OF THE CLOSE TO FAULT TYPE.

OPTIONS FITTED									

ISSUE 1	ISSUE 2	ISSUE 3	ISSUE 4	ISSUE 5	ISSUE 6	ISSUE 7	ISSUE 8	C.A.D. Software	AUTOCAD	ISSUE No.	DRN	CHK	TITLE
VS.00 FIRMWARE NFPA20, 2013 CHANNELS ADDED										1 4-OCT-2013	D.Ca		SCHEMATIC DIAGRAM FOR CONTROLLER TYPE FD4e (V5.0)
4-OCT-2013										2			DRG. No. SH1 1 OF 1
													AE2221/N v500
											Metron-Eledyne GRANTHAM, ENGLAND TELEPHONE (01476) 516120 WWW.METRONLEDYNE.CO.UK		
											SERIAL No.		© THIS DRAWING IS THE COPYRIGHT OF METRON-ELEDYNE AND MUST NOT BE LENT, COPIED OR REPRODUCED WITHOUT PRIOR PERMISSION.