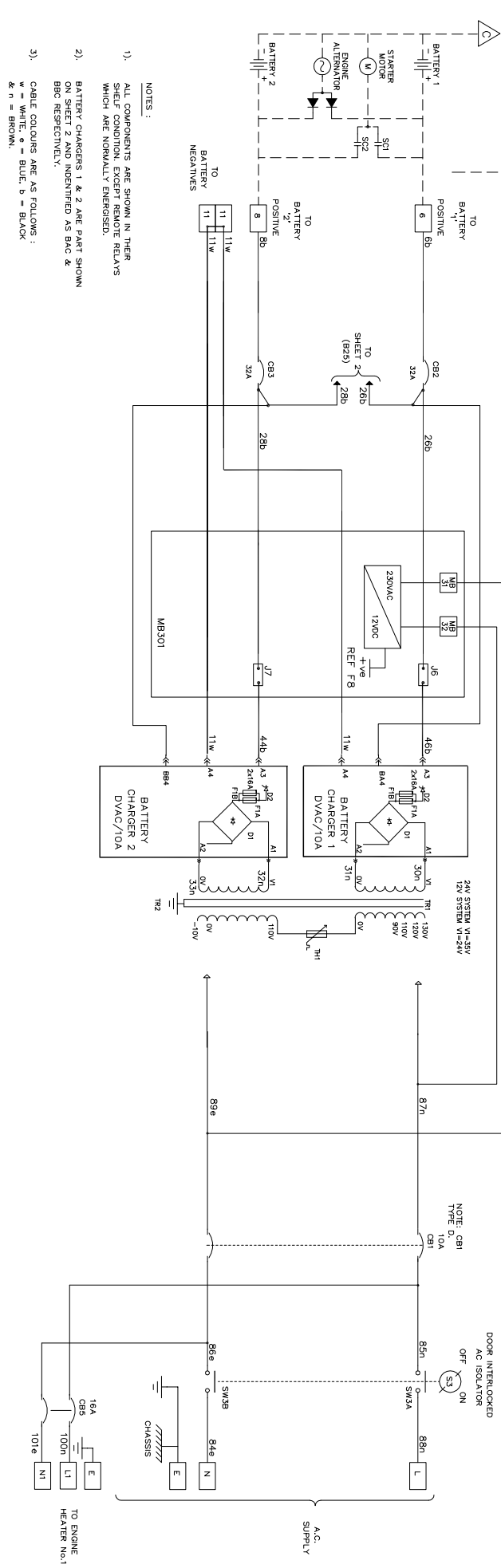


ENGINE EQUIPMENT IS SHOWN FOR CLARITY



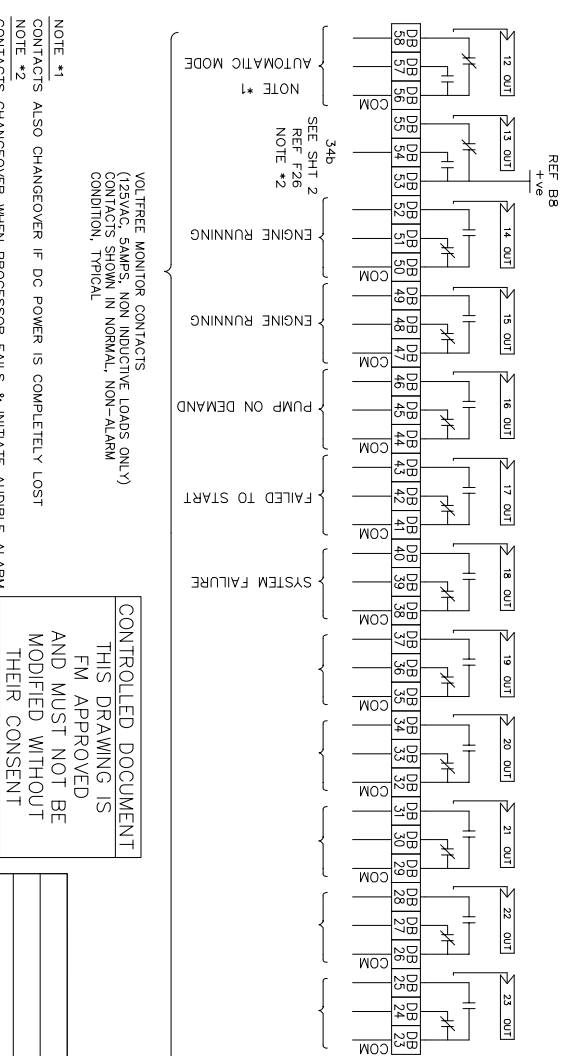
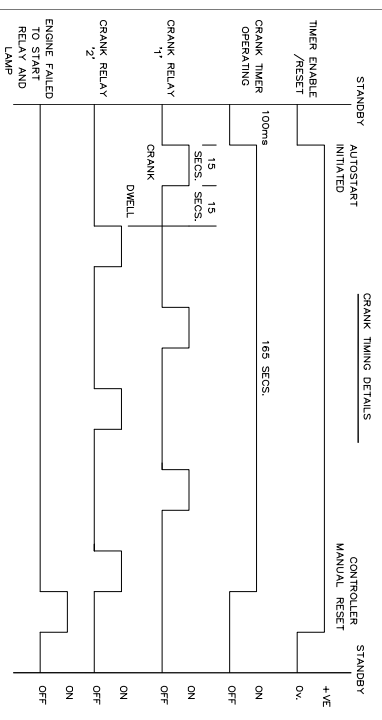
- NOTES:
- 1) ALL COMPONENTS ARE SHOWN IN THEIR SHELF CONDITION EXCEPT REMOTE RELAYS WHICH ARE NORMALLY ENERGISED.
 - 2) BATTERY CHARGERS 1 & 2 ARE PART SHOWN ON SHEET 2 AND IDENTIFIED AS BAC & BBC RESPECTIVELY.
 - 3) CABLE COLOURS ARE AS FOLLOWS:
 - w = WHITE, * = BLUE, b = BLACK & n = BROWN.

MOTHERBOARD MB300 JUMPER SETTINGS

DAUGHTERBOARD DB300 JUMPER SETTINGS

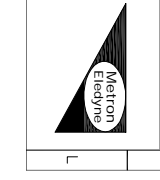
AND 0-20AMPS CHARGER OR 0-15AMPS CHARGER (OPTION JJ)

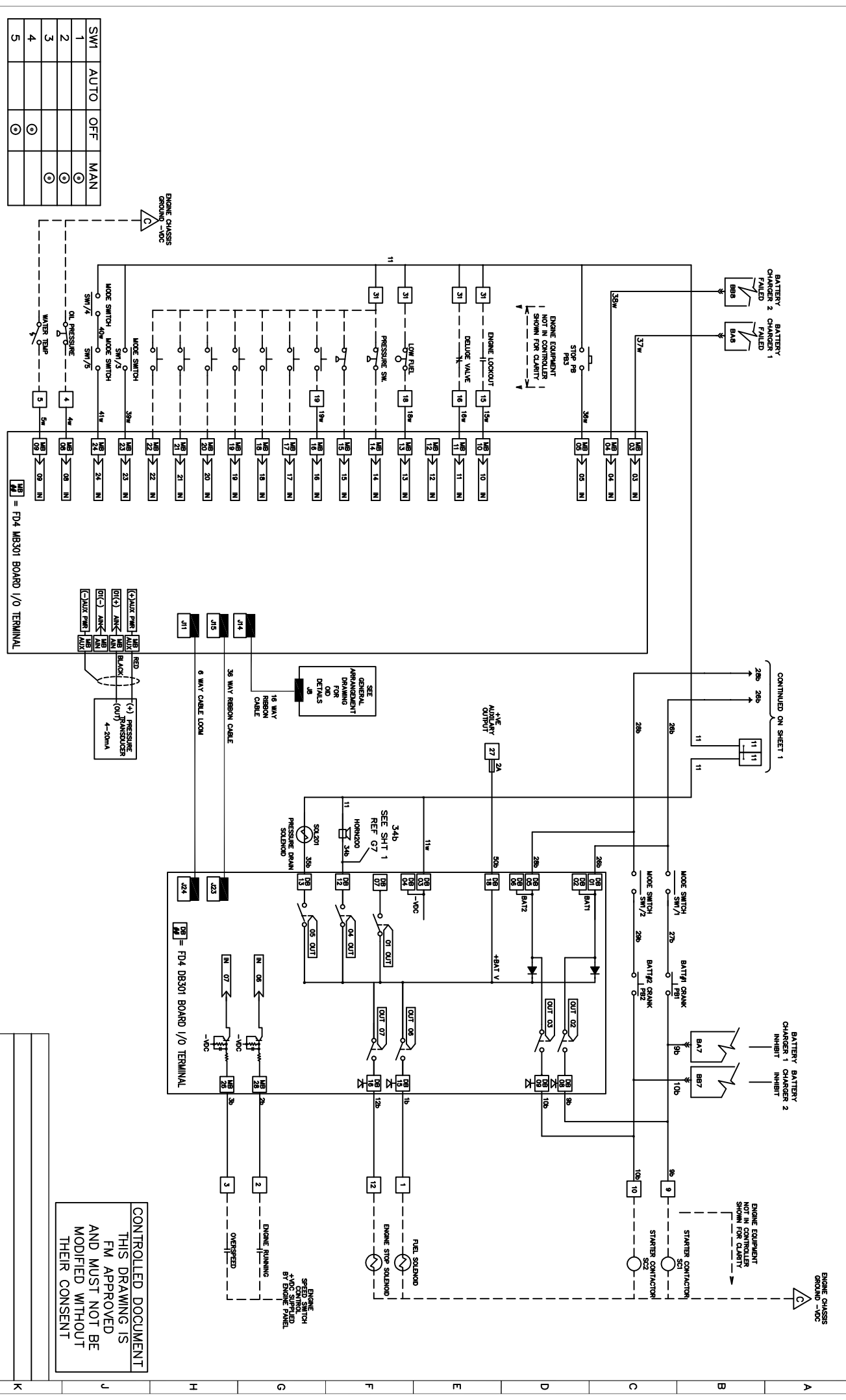
OR 0-17.4/18 0-20AMPS CHARGER (OPTION JJ)



CONTROLLED DOCUMENT
THIS DRAWING IS FM APPROVED AND MUST NOT BE MODIFIED WITHOUT THEIR CONSENT

ISSUE 1	ISSUE 2	ISSUE 3	ISSUE 4	ISSUE 5	ISSUE 6	ISSUE 7	ISSUE 8	CAD SOFTWARE	AUTOCAD	ISSUE NO.	1	9-MAV-09	DRN	CHK	TITLE	SCHEMATIC DIAGRAM FOR CONTROLLER TYPE F04e (V4.1)	DRG. NO.	SH 1 of 3	AE2221
INITIAL DRAWING	CUSTOMER ISSUE																		
9-MAV-09																			





SW1	AUTO	OFF	MAN
2			
3			
4			
5			

ISSUE 1 ISSUE 2 ISSUE 3 ISSUE 4 ISSUE 5 ISSUE 6 ISSUE 7 ISSUE 8

ISSUE 1: SEE SHEET 1 FOR ISSUE AND REVISION DETAILS

CUSTOMER ISSUE:

C.A.D. SOFTWARE: AUTOCAD

ISSUE NO. 1 9-MAY-09

DRN: D.Co

CHK:

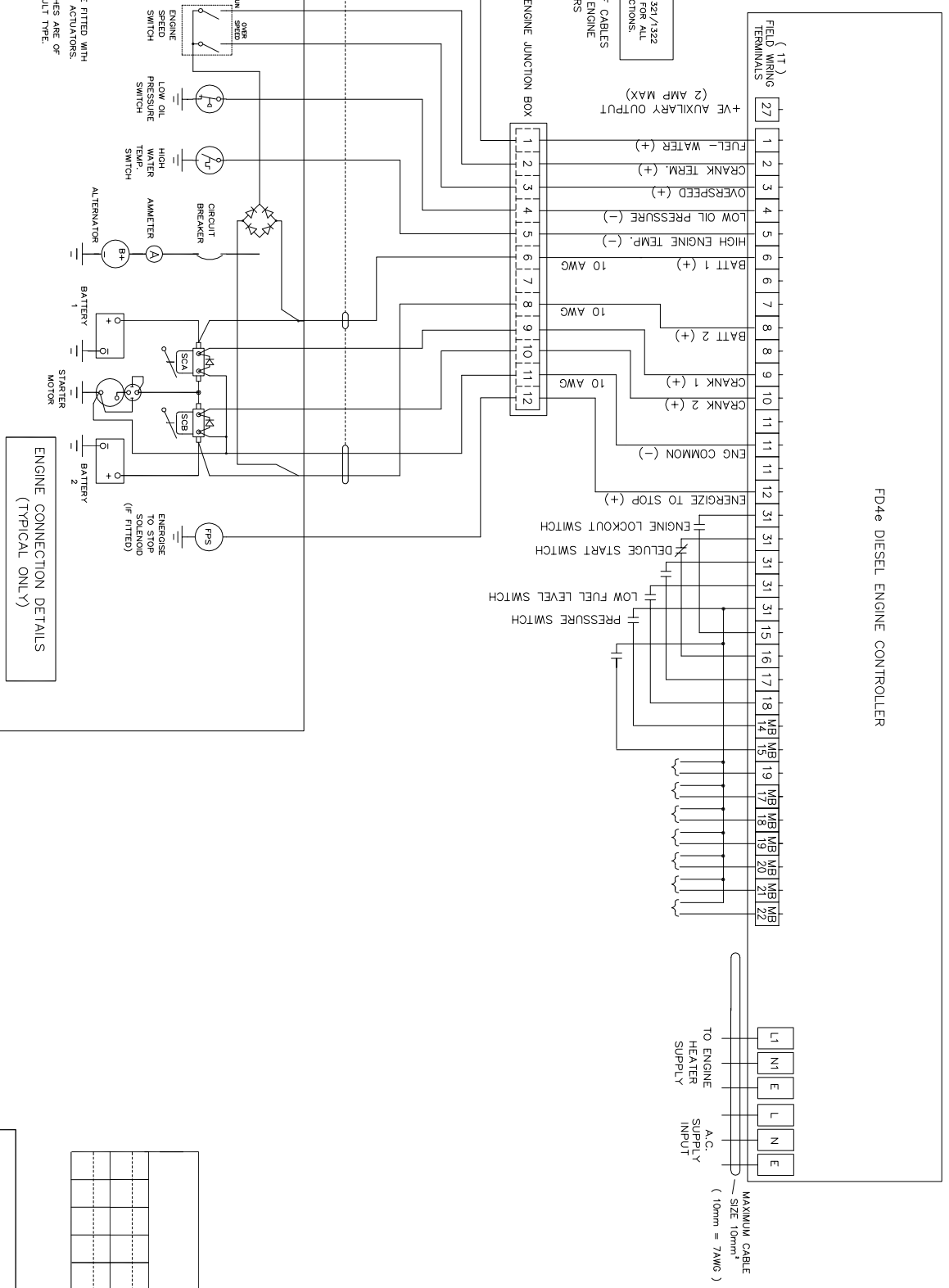
TITLE: SCHEMATIC DIAGRAM FOR CONTROLLER TYPE PD4 (V4.1)

DRG. NO. A22221

SH 3 of 3

METRON ENGINEERING

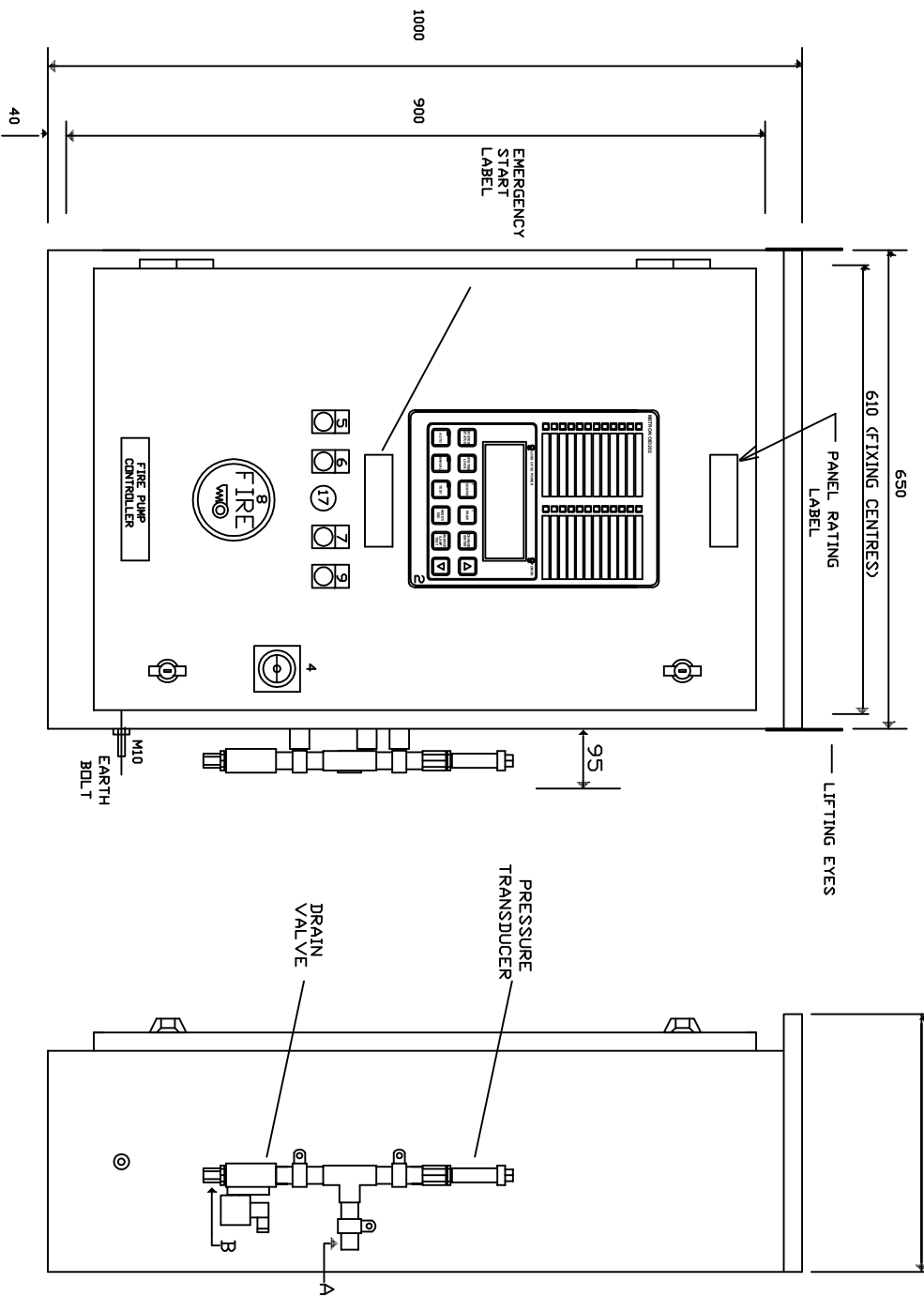
CONTROLLED DOCUMENT
 THIS DRAWING IS
 FM APPROVED
 AND MUST NOT BE
 MODIFIED WITHOUT
 THEIR CONSENT



ISSUE 1	ISSUE 2	ISSUE 3	ISSUE 4	ISSUE 5	ISSUE 6	ISSUE 7	ISSUE 8	C.A.D. SOFTWARE	AUTOCAD	SERIAL NO. THIS DRAWING IS THE COPYRIGHT OF METRON-ENGINEERING AND MUST NOT BE LAN- COPIED OR REPRODUCED WITHOUT PRIOR PERMISSION.	
ISSUE 1	ISSUE 2	ISSUE 3	ISSUE 4	ISSUE 5	ISSUE 6	ISSUE 7	ISSUE 8	C.A.D. SOFTWARE	AUTOCAD		
ISSUE 1	ISSUE 2	ISSUE 3	ISSUE 4	ISSUE 5	ISSUE 6	ISSUE 7	ISSUE 8	ISSUE NO.	DRN	CHK	TITLE
09-MAY-09								09-MAY-09	D.Co		SCHEMATIC DIAGRAM FOR CONTROLLER TYPE FD4e (V4.1)
DRG. NO. AE2221/N											
Metron-Engineering GENERAL ENQUIRY TEL: 01753 665000 WWW.METRONENGINEERING.CO.UK											
SH 3 of 3											

1 2 3 4 5 6 7 8 9 10 11

CONNECTIONS 'A' AND 'B' ARE 1/2" (M) NPT.



NOTES:
DIMENSIONS SHOWN IN MM.
APPROXIMATE WEIGHT: 78kg

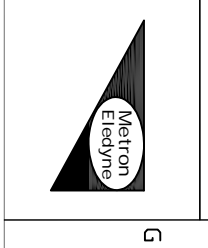
ISSUE 2	ISSUE 3	ISSUE 4
SPEEDSWITCH FAIL INDICATOR REMOVE	CUSTOMER ISSUE!	

3RD ANGLE PROJECTION	SERIAL No.

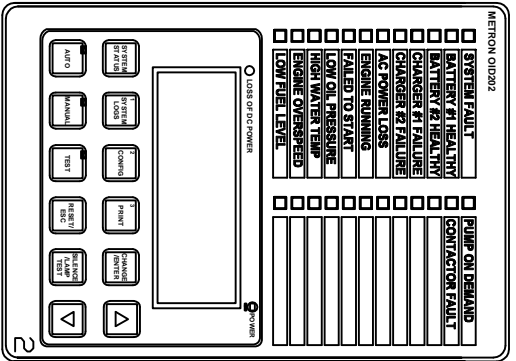
ISSUE No.	24-DEC-2010
DRN	DCA
CHK	

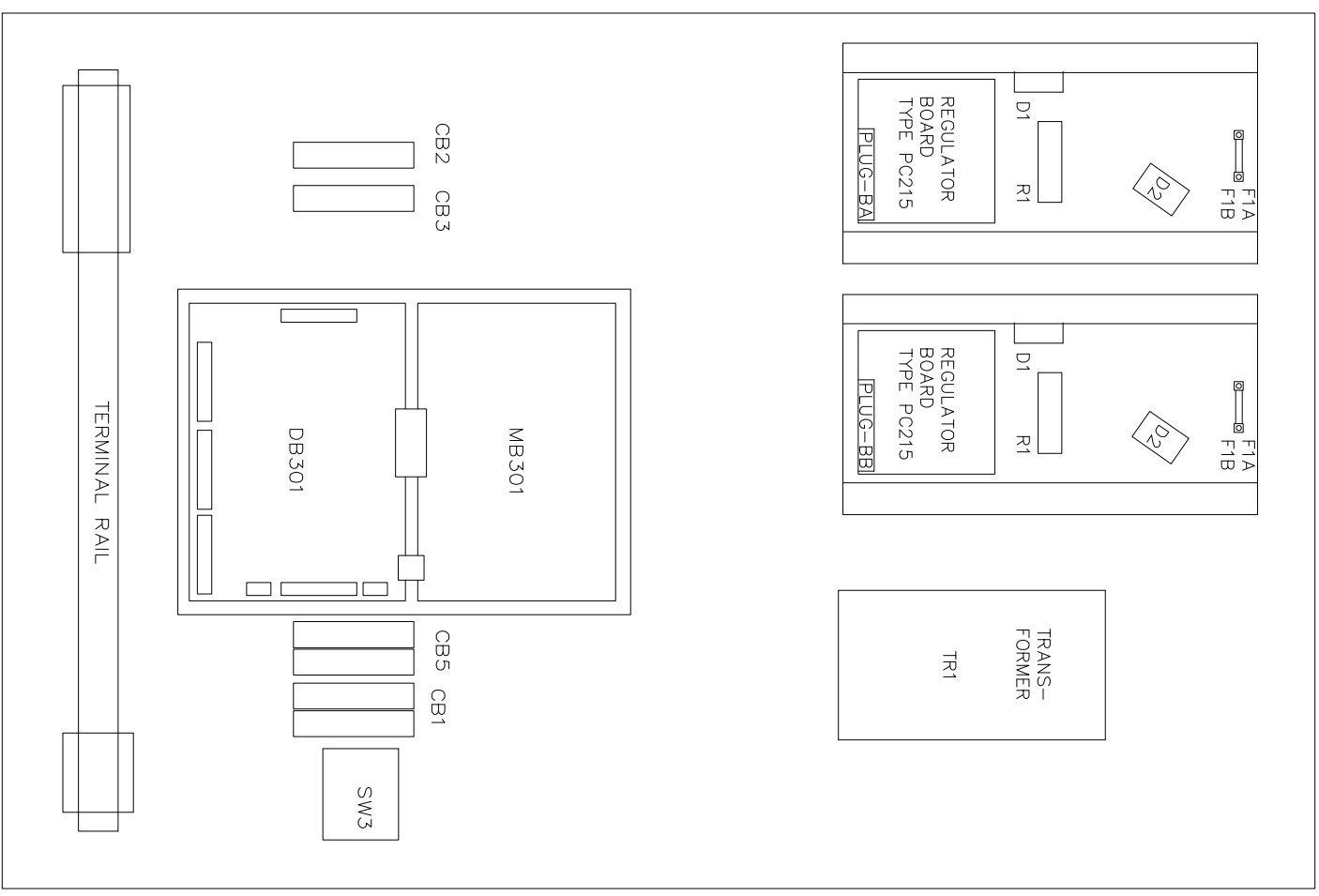
TITLE	
GENERAL ARRANGEMENT CONTROLLER TYPE FD4E (V4.1)	
NEMA 2	

DRG. No.	AM3139
----------	--------



DESCRIPTION	
2	DID202 OPERATOR INTERFACE DISPLAY
3	AC ISOLATOR (DOOR INTERLOCKED) SW3
4	CRANK 1 BUTTON PB1
5	CRANK 2 BUTTON PB2
6	MODE KEY-SWITCH (AUTO-OFF-MAN) SW1
7	BREAK GLASS MODULE (MODE KEY INSIDE) PB3
8	STOP PUSHBUTTON
9	
10	
11	
12	
13	
14	
15	
16	
17	ELECTRONIC SOUNDER
18	





METRON OID202

<input type="checkbox"/>	SYSTEM FAULT	<input type="checkbox"/>	PUMP ON DEMAND
<input type="checkbox"/>	BATTERY #1 HEALTHY	<input type="checkbox"/>	CONTACTOR FAULT
<input type="checkbox"/>	BATTERY #2 HEALTHY	<input type="checkbox"/>	
<input type="checkbox"/>	CHARGER #1 FAILURE	<input type="checkbox"/>	
<input type="checkbox"/>	CHARGER #2 FAILURE	<input type="checkbox"/>	
<input type="checkbox"/>	AC POWER LOSS	<input type="checkbox"/>	
<input type="checkbox"/>	ENGINE RUNNING	<input type="checkbox"/>	
<input type="checkbox"/>	ENGINE FAILED TO START	<input type="checkbox"/>	
<input type="checkbox"/>	ENGINE LOW OIL PRESSURE	<input type="checkbox"/>	
<input type="checkbox"/>	ENGINE HIGH WATER TEMP	<input type="checkbox"/>	
<input type="checkbox"/>	ENGINE OVERSPEED	<input type="checkbox"/>	
<input type="checkbox"/>	LOW FUEL LEVEL	<input type="checkbox"/>	

Loss of DC POWER POWER

1 SYSTEM STATUS PRES 322 BATT1 12V BATT2 12V

2 SYSTEM LOGS psi 300 psi 9A psi 9A

3 CONFIG PRINT CHARGE/ENTER

AUTO MANUAL TEST RESET/ESC SILENCE/TEST

▲ ▲

ISSUED	1	SERIAL No:	Metron—Eledyne	DRG. No.	AE2221/1
		DRN	CHK	TITLE FD4e	
		D.Co		INTERNAL LAYOUT & ANNUNCIATOR	