

JOCKEY PUMP CONTROLLER For European Fire Pump Applications

**Metron
Eledyne**

Type **M15n**

Release 1.3

Features:

- X The Metron Eledyne motostart type M15n electric motor controller is designed for automatic and manual starting of direct on line electric motor driven jockey pumps. Components are contained in a locking sheet steel enclosure, ingress protection is rated at NEMA2 (IP54), finished in red, to our paint specification PSO396.
- X Alternatively a weatherproof enclosure is available providing an ingress protection to NEMA4 (IP65), with a red paint finish PSO396.



NFPA - IEC

Control System:

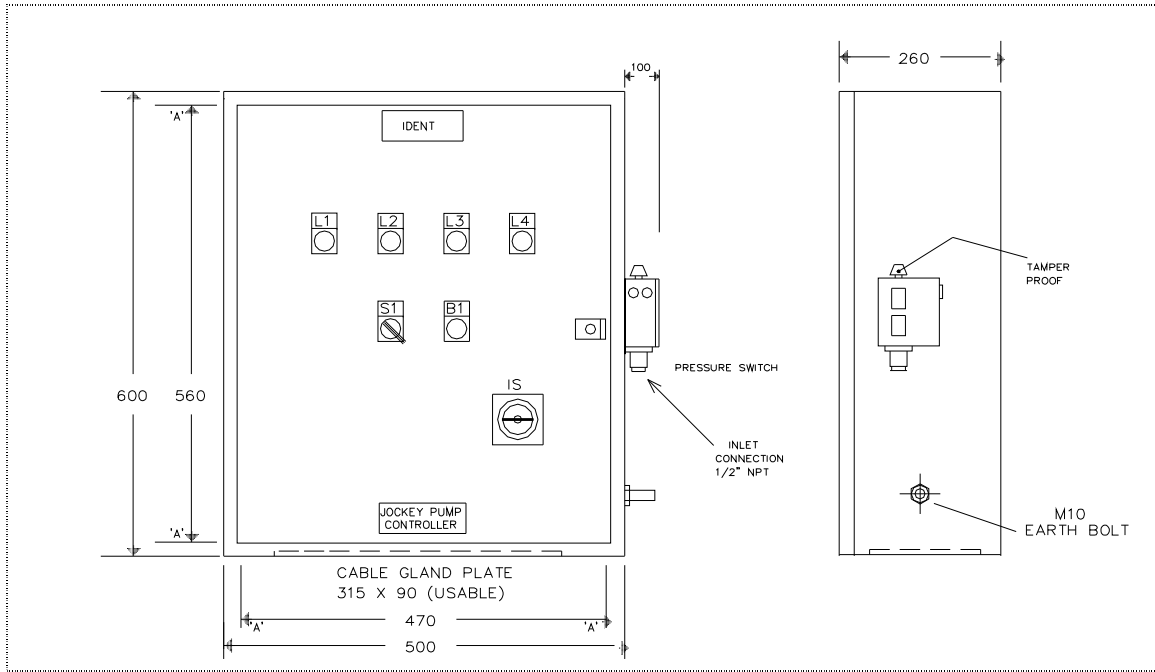
- X Manually operated door-interlocked isolator suitably rated for the motor kW.
- X +12v dc internal power supply, for internal logic and timers.
- X Pressure switch input, close to start, driven at a safe +12v dc power level.
- X Automatic adjustable delay start timer.
- X A mode selector switch with Automatic, off and manual positions.
- X Stalled rotor protection by direct acting adjustable thermal overload unit.
- X Auto-closing heavy duty direct on line contactor rated at least 115% of motor FLC
- X Automatic run on timer to stop the pump after an adjustable time delay.
- X External cable connections are through enclosure bottom fitted cable gland plate. (Incoming and outgoing cables terminate directly onto the isolator/contactor).
- X Controller can be supplied with standard equipment as a stock item, and overload modules sold separately.

Equipment:

Lamps	Volt free contacts
Control circuit healthy, green	Control circuit healthy
Auto mode on, green	Auto mode on
Motor overload, red	Motor overload
Motor running, amber	Motor running
Switches	
Lamp test push button	
Mode selector: Auto – off – manual	

RoHS & WEEE
COMPLIANT
WEE/CFO105WV





General Arrangement Drawing: (shown with option p – pressure switch)

Overload types Available:

Overload Selection	
Motor FLC Range	Overload type
0.25 to 0.4A	08930
0.5 to 0.63A	08896
0.63 to 1A	08931
1.0 - 1.6A	08922
1.25 - 2.0A	08923
1.6 - 2.5A	08919
2.5 - 4.0A	08924

Overload Selection	
4.0 - 6.0A	08898
5.5 - 8.0A	08897
7.0 - 10.0A	08913
9.0 to 13A	08886
12 to 18A	08899
17 to 25A	08932
25 to 32A	08890

When ordering, please specify;

Motor full-load current / overload
Supply voltage and frequency.
Any options required.

Options

- A Anti condensation heater
- E Motor heater supply output
- P Pressure switch
- W NEMA 4 weatherproof enclosure

Type

M15n/voltage/kW/Options



METRON ELEDYNE

18 Autumn Park, Dysart Road, Grantham, Lincs. NG31 7DD. United Kingdom

Telephone: +44 (0) 1476 516120 FAX: +44 (0) 1476 516121

email: info@metroneledyne.co.uk www.metroneledyne.co.uk